



WELCOME/RECORDS	2	INSTALLATION.....	6-8
WARNINGS	3	MAINTENANCE & REPLACEMENTS ...	9
PARTS & ACCESSORIES	4	SPECIFICATIONS	10
DIAGRAMS	5	WARRANTY	11

THANK YOU

Thank you for your purchase of the Jet Pure Magnum Commercial Air Purification Unit. This manual will tell you everything you need to know about your Jet Pure, including installation of the unit and replacement of the cells. Please read through it carefully and use safety when handling or installing your unit.

We hope you enjoy your brand new Jet Pure Magnum and the many benefits you will receive from its use.

Sincerely,



Allen Johnston, President/CEO

RECORDS

PURCHASE DATE: _____

DEALER NAME: _____

DEALER PHONE: _____

SERIAL NUMBER: _____



- Use this unit only in a manner intended by the manufacturer. If you have questions, contact the manufacturer.



- Never insert hands into the unit's intake while it is plugged in or running.



- Do not expose to rain or water.



- Before cutting or drilling into a ceiling, make sure no electrical wiring is in the area.



- Avoid looking directly at the UV lamps in the Air Purification Cell



- Follow all installation instructions.



- Before servicing or cleaning the unit, switch the power off and unplug from its power source.



- Replace filter regularly to avoid damaging your unit.

YOUR JET PURE AIR PURIFICATION SYSTEM COMES WITH THE FOLLOWING PARTS AND PIECES:

Assembled:

- 1 Jet Pure Magnum Tube
- 1 Blower
- 1 Blower Motor Power Junction Box
- 1 Air Intake Filter

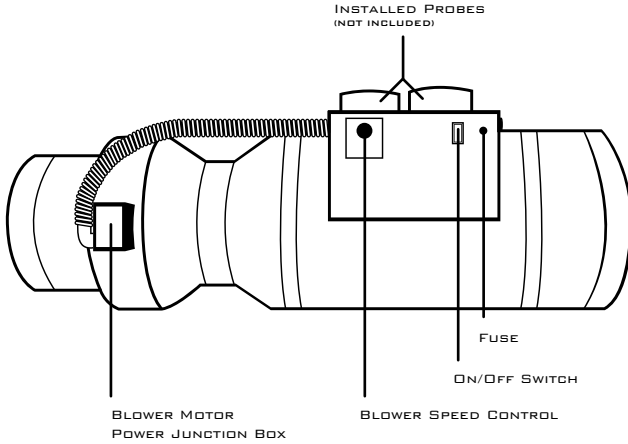
Unassembled:

- 2 Gripple Suspension Systems (Includes: Gripple, Toggle, Cable, Additional Instructions)

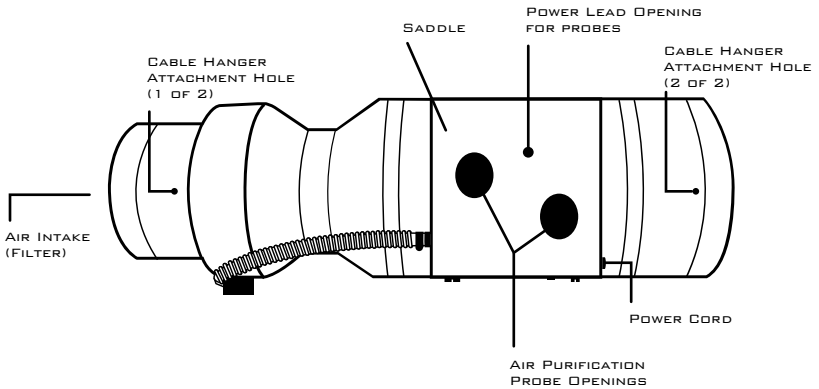
ADDITIONAL PARTS & ACCESSORIES:

Jet Pure and Jet Pure Magnum are both capable of holding 2 separate HVAC Probes. These must be purchased separately under their own warranty. Below are the cell types that can work in both Jet Pure and Jet Pure Magnums.

SIDE VIEW



TOP VIEW



INSTALLATION

WHERE SHOULD JET PURE BE USED?

Jet Pure Magnum is intended for use in areas not served by HVAC ducting or large high-ceilinged areas not able to tie into the duct system, grocery warehouses, food processing areas, kennels, casinos, general warehouse spaces and much more. Consult your dealer on whether Jet Pure Magnum is right for your situation before installing the unit.

HOW SHOULD JET PURE BE INSTALLED?

Jet Pure Magnum comes with a Gripple Suspension System that should be used to suspend the unit in the highest practical location. Use a beam, truss or joist, etc. that is capable of supporting the weight of the unit. Make sure this location is easily accessible for filter or cell replacement.



Allow at least 3 feet of clearance in front of the unit intake.

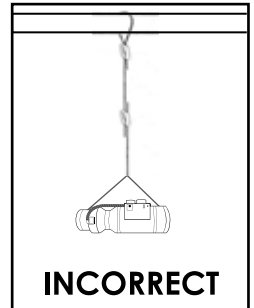
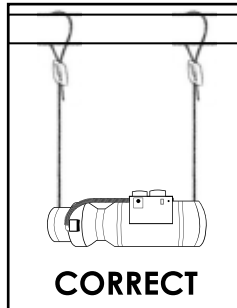
SUSPENSION INSTALLATION

This is a general installation guide for the Jet Pure Magnum using the Gripple Suspension System. The following is the manufacturer's recommendations for hanging your Jet Pure Magnum System.

*If your situation requires a different application, review the Gripple installation guide included in your Jet Pure Magnum packaging for the best solution.



Use each of the supplied Gripples and Toggles on separate *Cable Hanger Attachment Holes* (**Review DIAGRAMS on Page 5**). Gripples should not be used on the same wire.



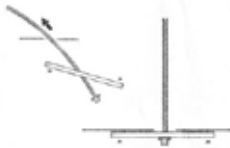
1 - A. Draw the toggle plate back from the end stop and align down the length of the wire.



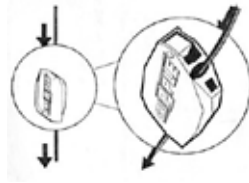
1 - B. Push the end stop and plate through the hole.



1 - C. When the toggle plate has cleared the hole, pull back on the cable, or simply let the weight of the object settle on the toggle.



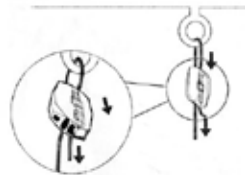
2. Push the cable tail end through one channel of the Gripple.



3. Pass the cable through the fixing point on the fixture (Beam, Truss, etc.).



4. Return the cable through the Gripple and push through the second channel. Pull the required length of cable through to raise the fixture to the desired height.



PROBE INSTALLATION

Your Jet Pure Magnum will already have your HVAC Probe(s) installed when it is shipped to you. If you only ordered one and choose to add an additional Probe this will show you how to install or remove the HVAC Probe from your Jet Pure Magnum.

1. Begin by removing the square plate from the *Saddle* (Refer to **DIAGRAMS**, page 5)
2. Next, remove the round plate underneath the Saddle cover.
3. Insert Probe into opening with the honeycomb facing the airflow and fasten with the (4) supplied screws.
4. Insert and lock the Probe's DC Power Cord into Probe.

PROBE REMOVAL

If you are removing the Probe to replace the bulb follow these instructions and then refer to your Probe's Owner's Manual for replacement instructions.

1. Unlock and remove the DC Power Cord from the Probe.
2. Remove the Probe from your Jet Pure Magnum.

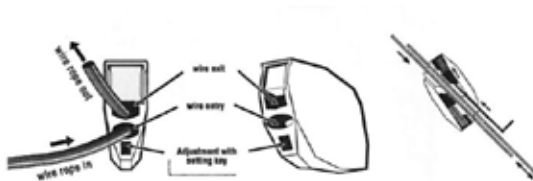


If you are only replacing the Probe or bulb continue from #3 in the section above.
If not, follow the instructions below.

3. Replace Round Cover inside the Saddle.
4. Replace Square Cover on top of the Saddle.

If your Jet Pure Magnum begins to have problems, contact GreenTech Environmental. If we can not help you troubleshoot the problem you will need to lower your Jet Pure Magnum and return it for repair.

To release the Gripper and lower the assembly, use the setting key, which allows the suspension to be lengthened and eventually released. When unlocking the Gripper be sure to have the weight of the Jet Pure Magnum supported to reduce the chances of injury to yourself or damage to the unit.



REPLACEMENTS

If your Jet Pure Magnum unit has any maintenance problems or requires replacements of parts you will need to contact GreenTech Environmental.

If you are looking to replace your HVAC Probe (**that is no longer under warranty**) for any reason you will need to contact your dealer to purchase a new one.

If your HVAC Probe is having problems and is still under warranty contact your Probe's Manufacturer for maintenance or replacement.

SPECIFICATIONS

FEATURES:

- Photo Catalytic Oxidation Technology
- Significantly reduces mold, bacteria, and viruses
- Drastically reduces odors - doesn't cover them up
- Replaceable Rear Filter
- Replaceable PCO Cell(s) (**Not included**)
- Available port for second PCO Cell
- Low energy consumption
- Hanging cables and connectors included

TECHNICAL SPECS:

- Weight: 52 lbs
- Input: 120V / 60 Hz or 220V / 50 Hz
- Usage: Min 380W / 3.35A, Max 400W / 3.55A
- Sound: Min 70dB, Max 80dB (at 8ft)
- Air Flow: Min 850 CFM/Max 1000 CFM
- Dimensions: 21.5" H x 18" W x 53" L (Cells Installed)
- Warranty: 5 Years*

*HVAC Probe Warranty separate from Jet Pure's 5 Year Warranty.

LIMITED WARRANTY INFORMATION

Your Jet Pure Magnum (Product) is warranted to be free from all defects in material and workmanship in normal use for a period of 5 Years from date of purchase. Your HVAC Probe's Warranty is separate from Jet Pure's 5 Year Warranty. The warranty is granted only to the original purchaser. The warranty is subject to the following provisions:

Any damages or malfunctions caused by negligence, abuse, or use not in accordance with the Product Owner's Manual are not covered by this warranty. Likewise, any defects or damages caused by unauthorized service or the use of other than Genuine GreenTech Environmental Parts are not covered.

GreenTech Environmental, LLC. will, at its option, repair or replace a defective Product or part(s) for the Product that *is/are* covered by this warranty. As a matter of warranty policy, GreenTech Environmental, LLC. will not refund the customer's purchase price.

OBTAINING WARRANTY SERVICE

To obtain warranty service you must return the defective product along with proof of purchase to the GreenTech Environmental Authorized Service Center. All shipping costs submitted under this Warranty shall be borne by purchaser. Unless this Warranty is expressly renewed or extended by GreenTech Environmental, LLC., any repaired or replaced part of unit shall be warranted to the original purchaser only for the length of the unexpired portion of the original warranty. For the location of the nearest GreenTech Environmental Authorized Service Center or for other service information, please visit us online at:

www.GreenTechEnv.com/service

Before any product is sent for service, the customer should contact the GreenTech Environmental Service Center to obtain a Return Merchandise Authorization (RMA) Number. This RMA Number should be clearly written on the box before shipping. All components/parts including the remote (if applicable), manuals, and original packaging should be included in the return if available.

FURTHER LIMITATIONS AND EXCLUSIONS ARE AS FOLLOWS

Any warranty that may be implied in connection with your purchase or use of the Product, including any warranty of merchantability or any warranty for Fitness For A Particular Purpose is limited to the duration of this warranty. Some states do not allow limitations on how long an implied warranty lasts, so the above limitations may not apply to you.

Your relief for the breach of this warranty is limited to the relief expressly provided above. In no event shall GreenTech Environmental, LLC. be liable for any consequential or incidental damages loss of profit, or medical expenses caused by any misuse, abuse, accident, negligence, or failure to follow instructions. The company will not be responsible for any written or oral statements made that are inconsistent with this written warranty, or which are misleading or inconsistent with the facts as published by the company in the literature or specifications. Some states do not allow the exclusion or limitation of incidental or consequential damages, so the above limitation or exclusion may not apply to you. This Warranty gives you specific legal rights, and you may also have other rights which vary from state to state.

REGISTRATION

Please register your Product within 10 days of purchase by visiting www.GreenTechEnv.com/warranty or fill out and return the enclosed warranty registration card. Registering your new GreenTech Environmental product entitles you to the most up-to-date GreenTech Environmental warranty and promotion information.

***JET PURE
MAGNUM***